



Ranch Ehrlo Society



# outcomes

2024-2025 • Growing together for 59 years



Continual improvement is a top priority for Ranch Ehrlo Society to ensure the effective delivery of high quality programs and services. We use data from this report to evaluate services and identify opportunities for improvement.



# ABOUT THE RANCH



We are a non-profit organization dedicated to providing a range of quality assessment, treatment, education, support, and community services that improve the lives of children, youth, adults, and families.

The CARE model guides our work in supporting children, youth, and families. This multi-level program is designed to improve services in youth-serving organizations and is based on six principles: developmentally focused, family involved, relationship based, trauma informed, competence centred, and ecologically oriented.

In 2023, Ranch Ehrlo joined more than 600 organizations in adopting Ukeru, an innovative crisis prevention approach. It complements our existing model of care, which also includes Therapeutic Crisis Intervention techniques.

# Youth Group Living Treatment Programs

**Our integrated treatment approach for young people incorporates live-in services, clinical treatment, education, and recreation.**

Youth take part in activities designed to support the best outcome for them as individuals. They have access to psychiatric services, speech and language pathologists, equine-assisted learning, music and art-based therapy, and occupational therapy. Each youth follows an individualized treatment plan that includes both group and one-on-one therapy. They also spend time with highly trained staff engaging in land-based learning, and creative and athletic activities.



# Youth at the Ranch

Youth served  
278



Youth discharged  
113



Length of stay  
17 months



Emergency  
receiving

182

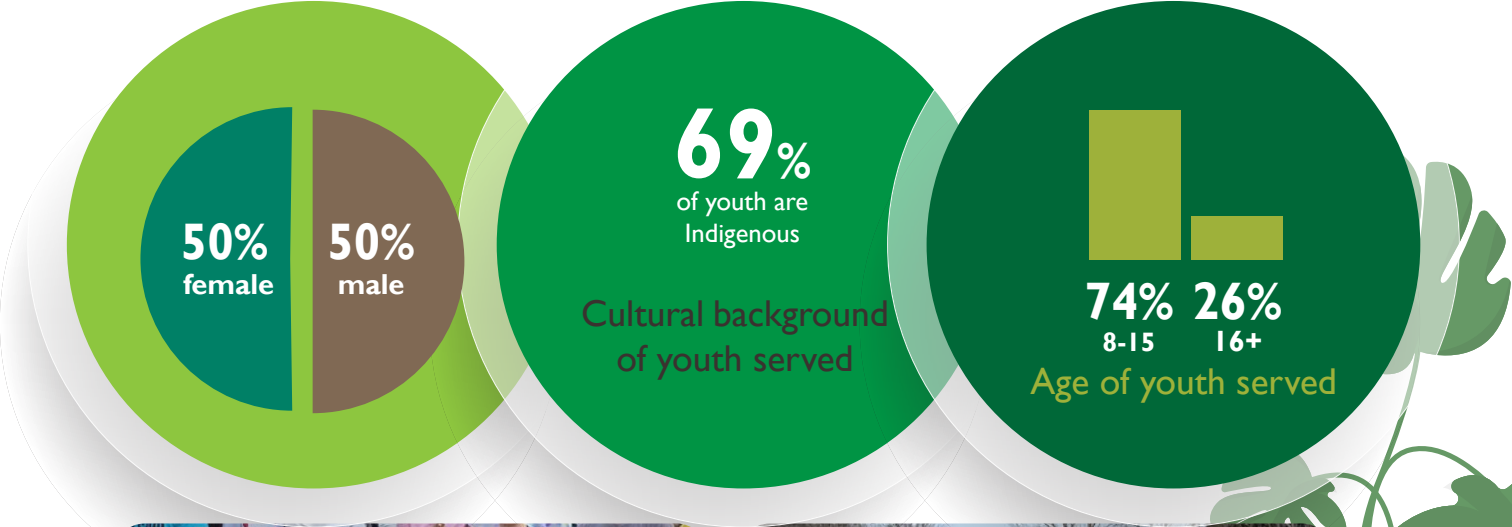
individual youth  
served in 24  
temporary beds



This year, youth from 12 southern Ranch Ehrlo programs took part in the agency's first Indigenous hand games tournament. The traditional stick games blended competition with cultural learning, offering participants a hands-on connection to Indigenous history, community, and teamwork. With support from cultural mentors, youth learned the meaning behind the drumming, storytelling, and strategy.



# Youth statistics (youth served by Group Living Treatment Services)





# More on our philosophy

**“We have the chance to do activities and sports. The treatment programs have really helped me and others.”**

youth, 2025 survey



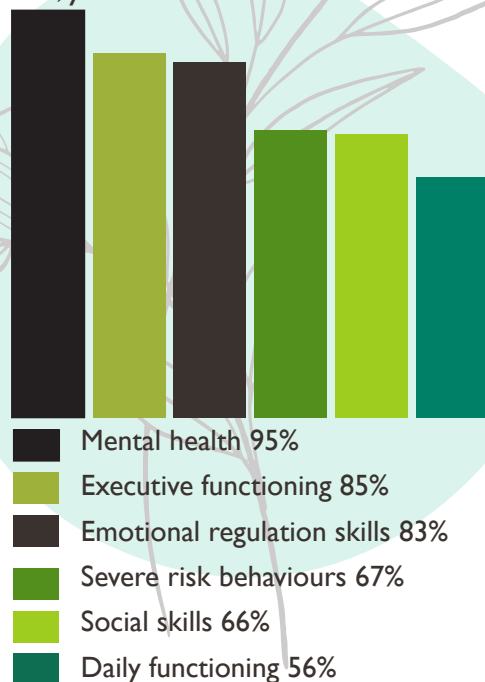
We believe young people do the best they can when provided with safe and accepting environments; warm, trusting, and nurturing relationships; and fun, therapeutic, educational activities. Our highly trained and caring staff are dedicated to helping youth work through issues and achieve personal goals.

Tasha\*, a youth participant, has grown into a resilient leader and role model. Her academic achievements earned her a spot at a science, technology, engineering and mathematics camp at the University of Saskatchewan and an invitation to a national youth conference in Toronto. With staff guiding her, she continues to focus on education, cultural identity, and giving back to her community.

*\*name changed to protect youth's identity*

# Need for service (youth served)

Youth come to Ranch Ehrlo for a variety of reasons. Once needs are identified, service and treatment plans are created in consultation with the youth, their parents or guardians, and staff from referring agencies. While at the Ranch, youth work with staff to achieve their treatment goals and address the issues that brought them here.



Appleton House is addressing mental health and emotional regulation challenges among youth through a new equine therapy program. Over six weeks, participants engaged in hands-on activities with horses, which helped build trust, confidence, and social skills in a safe, supportive setting. Unlike traditional talk therapy, the equine sessions offer immediate, non-judgmental feedback — making them effective for youth who struggle with verbal expression or resist conventional treatment. Plans are underway to expand the program and reach more participants throughout the year.





# Family involvement

Families who were satisfied or very satisfied with their involvement during their child's stay at Ranch Ehrlo

63%

Parents/guardians who feel the Ranch has helped their child (22% who were "uncertain")

65%

91%

Parents/guardians who feel the Ranch is a safe place for their child



## Family connection and celebration

Family involvement is a vital part of Ranch Ehrlo's work with youth and adult participants. We encourage families to stay connected and engaged throughout the year and invite them to take part in key events, including our annual awards nights. Held in three events, Awards Night is a chance to celebrate the achievements, growth, and perseverance of our participants. The events bring together families, staff, and youth to reflect on milestones and share in the pride of each person's journey.

**Our son is thriving. He has become more patient and cooperative. There is a huge improvement in many areas, especially self-regulation.**

parent, 2024 survey

# Community involvement

Community engagement teaches youth how to build healthy relationships and reintegrate into their communities. Youth spend a great deal of time in their communities volunteering at fundraising and local events.

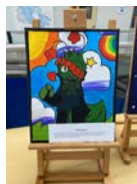
Youth think the Ranch helped them to participate in fun community activities

82%

Ranch Ehrlo's Youth Representative Council launched its first-ever Fill the Fridge competition, collecting 300 pounds of food for Regina's community fridges while giving youth a meaningful lesson in giving back.



One of our youth reached an exciting milestone this year by showcasing his artwork at a local community arts event. His collection of original, game-inspired characters was met with enthusiastic support and praise. With help from his caseworker and Ranch Ehrlo's Paper Crane art studio, he overcame a creative block and rediscovered his passion.



Every activity for youth in group living programs is thoughtfully planned with purpose. Through activities in the community and nature, youth are encouraged to explore new experiences, helping them grow confidence, skills, and interests. Staff use sequential planning to ensure that even simple outings, like hiking or dining out, foster personal growth, connection, and therapeutic outcomes.

# Youth functioning

The Child and Adolescent Needs and Strengths (CANS) is a multi-purpose tool developed by Dr. John Lyons for children's services to support decision making, service planning, and the monitoring of outcomes. The CANS is based on a four-point scale with "0" and "1" indicating "no issue" or "watchful waiting" and "2" and "3" indicating the need for "action" or "immediate/intense action" due to risk/safety.

**91** per cent of the youth who were admitted with severe or moderate mental health challenges improved by at least one point by time of discharge.

***"I would rather have my son home, but if he has to be away from home, I would not want him anywhere else."***

parent, 2024 survey



Per cent of youth who chose to participate in traditional activities

**72%**

Last spring, Mckenna, a personal support worker led a ribbon shirt and skirt-making workshop, giving participants a chance to create traditional Indigenous garments and deepen their cultural understanding. The inclusive session was designed to meet participants where they are, fostering a comfortable and supportive environment.

One of our goals is to support the psychological growth and social integration of the youth in our care. To help track progress, we use the Child and Adolescent Functional Assessment Scale (CAFAS), which measures how much emotional, behavioural, psychiatric, psychological, or substance use challenges are affecting a young person's daily functioning. Scores range from 0 to 240, with higher scores reflecting more serious impairments.

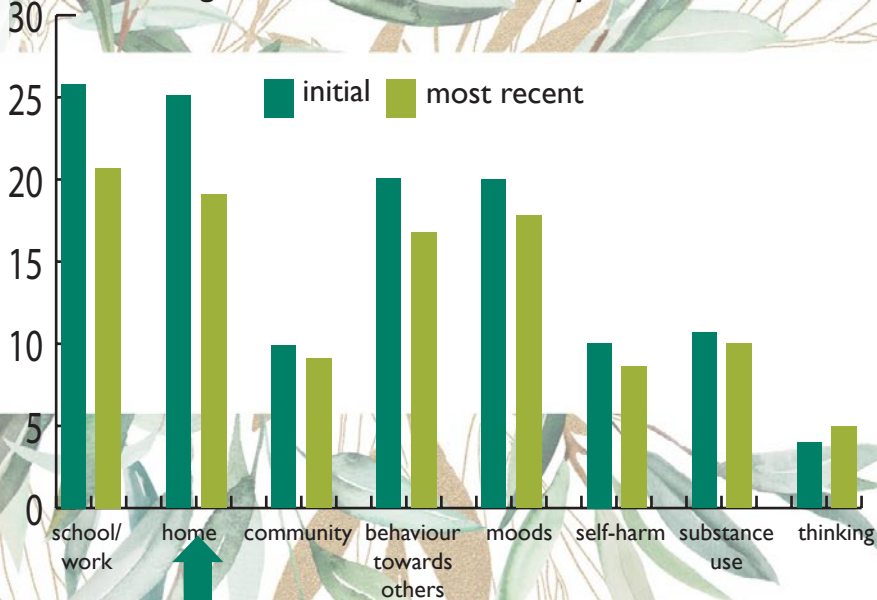
At intake, the average CAFAS score for our youth was 127. Most recently, the average had decreased to 107—a meaningful drop that reflects improved functioning in the structured, nurturing, and supportive environments at the Ranch.



A new music club is providing youth with a creative outlet to learn guitar, bass, and drums, while building skills, coping mechanisms, and friendships. Guided by passionate staff, the group meets weekly.

# Youth functioning

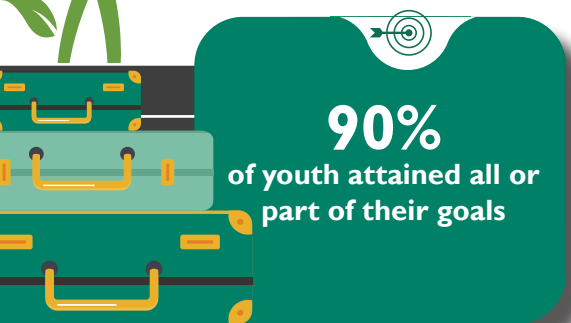
Average subscale CAFAS scores for youth served



75%

of youth showed improvement in their CAFAS score

# To where are youth transitioning?



The staff is here to help us so we can work our way home.

youth, 2025 survey

# Six month follow-up

We take care and interest in how young people adjust to life after our programs. A six month follow-up is completed through a phone interview. This year, **75** discharged participants were able to participate. We are looking at ways to increase the response rate.

After spending years in group homes, Kevin Bligh came to Ranch Ehrlo at age 14. Now 35, he recently returned to reconnect with the staff who helped shape his path. Kevin remembers the Ranch not just as a place to stay, but as a place to grow — where he found stability, support, and the chance to be a “normal” teenager. Today, Kevin is a father and husband, and credits much of his success to the care and life skills he gained during his time at Ranch Ehrlo.



58% of former youth under 16 are attending school



11% of former youth are working part or full-time (or attending training)



69% of former youth have positive or very positive relationships with parents or peers



63% of former youth have moderate to high involvement in recreation/ community services



35% of former youth are living with family or extended family



14% of former youth are on their own



# Supported Living Programs

Ranch Ehrlo Society supports persons experiencing disability by providing live-in, educational, clinical, and vocational programs to people with multiple, complex developmental needs. Care and support are focused on person-centred and strength-based services which provide participants the opportunity to develop skills to live more independently in their community.

A recent birthday celebration showed the power of connection, as a participant proudly planned their own party — complete with music, games, and cake — while staff added surprise entertainment to help make the day extra special.



Participants served

84



Participants discharged

1



Youth at Spruce Tree House are reaping the rewards of a summer garden project that's helped build skills, confidence, and a sense of pride. As part of a hands-on approach to learning, participants helped build garden boxes, plant seeds, care for vegetables, and cook with the food they grew. The project, now part of their daily routine, has offered meaningful ways for youth to contribute, learn, and grow — both in the garden and in themselves.

“I love my house. They treat me with respect. I like to go to the library, for walks and to my art classes.”

participant, 2025 survey

## SEP and VTEP now under one roof!

Ranch Ehrlo's Supported Employment Program (SEP) and Vocational Training Employment Program (VTEP) have officially moved to 2112 Turvey Road in Regina.

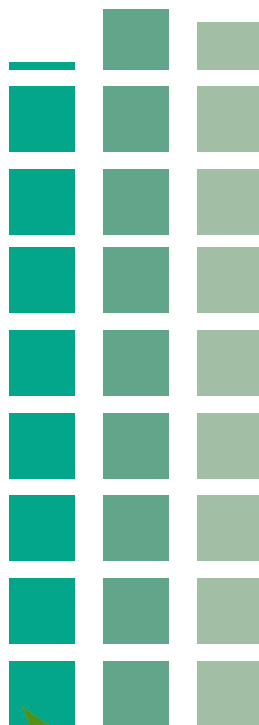
The new space brings all 26 participants and staff together, improving daily routines and supporting growing program needs. Participants now enjoy expanded opportunities in catering, firewood delivery, lawn care, and more — all in one convenient location.

These vocational programs help adults experiencing disability build skills for independence and success at home and in the community.



**95%**

of participants who improved their person-centred care goal ratings



**82%** of participants agree that living at the Ranch helped them deal with problems.

**89%** of participants are satisfied with the services.

**87%** of parents satisfied with the help participant received.

In May 2024, participants joined the City of Regina and members of the public to enjoy a community feast in celebration of the Mitakuyé Owâs'ā Centre, in the heart of Regina's Heritage Neighbourhood. Ranch Ehrlo's Sweet Grass Café, operated by young adults experiencing disabilities, helped prepare the meal by providing soups, bannock, and rice pudding under the guidance of Chef Trevor LaValley.



# Vocational programs

**Ranch Ehrlo has five different learning and vocation programs for participants experiencing developmental and cognitive disabilities.**

Many vocational participants work hand-in-hand with our property management team at the Ranch to better the lives of their peers and build meaningful relationships. One such is the team at the Vocational Training Employment Program who focus on developing life skills, vocational training, and skill development, and supervised vocational activities.

of vocational goals were achieved

**93%**

of participants said they learned new skills

**95%**

**“Working at Sweetgrass Café is so cool. I like the staff and all the guys there.”**

vocational participant,  
2025 survey

**I like my job and getting to spend time with my friends. They teach me lots and help me grow.**

vocational participant,  
2025 survey



# Education

Ranch Ehrlo offers alternative education opportunities to students who have had little experience or success in traditional school settings. Our education centres provide youth with an accredited educational curriculum and additional learning resources. We also have classrooms in the cities of Regina and Prince Albert to help students integrate into mainstream education.

**A participant in one of Ranch Ehrlo's programs recently celebrated a major milestone — graduating with an Adult 12 diploma. The achievement marks the result of hard work, resilience, and a strong commitment to education. Despite challenges along the way, the graduate stayed focused on their goals and proved that perseverance can lead to success.**

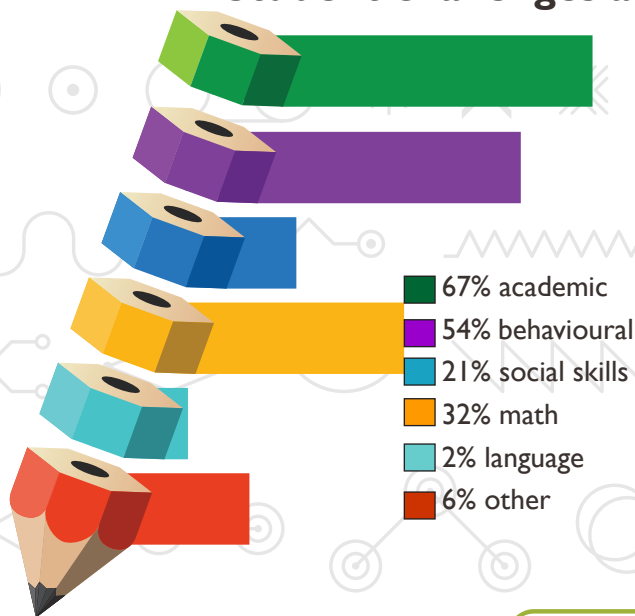
**I like the opportunity to start over again and get back into school.**

youth, 2025 survey

families satisfied or very satisfied with the educational services and/or vocational training during their child's stay at Ranch Ehrlo

**68%**

## Student challenges at admission



“The desire for progress and goal setting has always been present. There is effort towards progression on behalf of both my son and staff. I am very appreciative of Ranch Ehrlo’s efforts.”

*parent, 2024 survey*



**88%**

of youth attending Regina high schools said being in a Ranch school program has helped them with their goals



**40%** as determined by standardized testing, 40% of youth who participated in their individual education plans (IEPs) improved their reading level

of students met part, all or exceeded their educational goal requirements

**80%**

## Teacher honoured with Métis Educator Award

Ranch Ehrlo teacher Scarlet Dawson received the Métis Educator award from Métis Nation Saskatchewan Western Region II (WR2).

Scarlet, who teaches in a Ranch classroom at Queen Mary Public School in Prince Albert, was recognized at the WR2 inspiration banquet for her outstanding contributions to education. A Ranch Ehrlo teacher since 2006, she credits the strong relationships she builds with students as the most rewarding part of her work.

“I get to wear many hats — teacher, caregiver, support — and it’s such a privilege to witness the growth in these kids.”

# Family Treatment Program


This program improves family safety, family functioning, and child well-being so families can remain together. The program works to either prevent the placement of children out of their home or to assist families in reunification after having a child in care.

In-home services assist the family in obtaining the knowledge, skills, and abilities to successfully reunify children to their care, including: child development counselling, effective parenting, mood management, life skills, budgeting, and accessing community resources.




**70%**  
families reunified

Two staff members at Ranch Ehrlo's Family Treatment Program are using their lived experience to support others on similar paths. Once participants themselves, Violet and Martine overcame addiction, reunited with their families, and now work to help other parents heal, grow, and reconnect with their children.



**89**  
families served



**93**  
children remained with family

## Workshop helps parents connect and heal

A moccasin-making workshop is helping parents in Ranch Ehrlo's family programs build connection, confidence, and cultural pride. Led by Linda, a participant and artisan from the Northwest Territories, the 12-week group became a space for creativity, conversation, cultural connection, and support — especially among parents from northern communities.





# Family Centred Addiction Program

The addictions treatment program supports both individuals with substance misuse and their families. Families live in secure, two or three-bedroom apartments with 24/7 on-site staff support. Participants engage in daily structured programming that combines holistic treatment for sobriety and relapse prevention, while also addressing trauma, mental health, co-dependency, and family dynamics.

Number of children  
who remained with  
their family **72**



**36**  
Number of families  
served in the  
program

**Our supportive family housing is growing to meet demand. Ranch Ehrlo's Family Centred Addiction Program (FCAP) is expanding, with new funding approved in the 2024 – 25 budget.**

**The growth comes in response to rising demand and increased interest from First Nations and community partners. To support this momentum, a new executive director of family programs was hired to provide strategic oversight across all family-focused services.**



# Intensive Family Preservation Services

The program is an intensive in-home family treatment program designed to keep children and families safe and prevent out-of-home placement of children. The time-limited services are family-focused, child-centred, goal-oriented, and provide in-home skills building, and after-care supports and linkages.

**92%** of parents  
who were satisfied or  
very satisfied with the  
services they received

**69%** of families  
that stayed  
together

## Building stronger families together

Ranch Ehrlo's family programs have partnered with Kosohkowew Child Wellness Society to support family healing and reunification. Last summer, Kosohkowew representatives visited to learn more about our services and inform the development of their own family treatment program. With a service agreement now in place, both organizations are committed to helping families heal, grow, and thrive.

My kids are actually telling me where they are going and coming home when I want them. They are cleaning up and going to school. My kids also have a day with me where they get to do something different.

family in the program

**33**



families served

**"The preservation therapists do a great job at providing constant support, education and advocacy for the families we work with."**

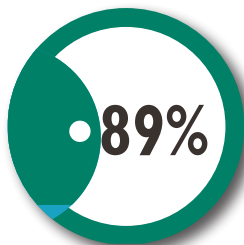
referring worker

# Treatment Foster CARE

This program, which operates in northern and southern Saskatchewan, provides family-based care for children using professional foster parents. Foster families support the care, treatment, and community engagement of the children while helping to develop and strengthen healthy relationships with birth or reunification families.

**It is extremely important and beneficial to the child, parents, foster parents, and the program to involve the biological families in the child's treatment plan.**

Dianna Stang, manager  
of TFC in the north



of children improved  
functioning based on  
CAFAS



of children showed  
progress in service goals



Families in the Treatment Foster Care (TFC) program regularly come together for workshops, mental health days, and special occasions—such as the start of summer. Recently, the northern families enjoyed a boating day at Emma Lake.



**30**  
children  
served

# Ehrlo Counselling Services

Ehrlo Counselling Services (ECS) provides counselling, training, and consultation services to Ranch Ehrlo clients and the community at large. Ehrlo Counselling provides prevention and intervention-based community services to individuals and families. They are intended to build and promote stronger, healthier, and more integrated communities.

**97%**

of clients that agreed or strongly agreed that counselling helped them

**795**

pro bono mental health sessions valued at \$127,120

**490**

clients served

ECS expanded its services this year and now offers Eye Movement Desensitization and Reprocessing (EMDR) therapy, which uses bilateral stimulation to help clients process and reduce trauma distress. Effective for both single and complex traumas, EMDR enhances brain function and integrates past experiences with current coping skills, involving minimal conversation compared to traditional talk therapy.

The therapists I have seen over several years have been essential for helping me through my depression and life issues. I am very grateful for their support since I have been seeing them.

client, 2025 survey

# Ehrlo Early Learning Centres

The Ehrlo Early Learning Centres (EELC) provide high quality childcare to families in Regina at five separate locations. Our philosophy is based upon experiential or real-life learning.



**This year, EELC leaders travelled to New Zealand to explore Te Whāriki, a bicultural early learning curriculum that weaves together Māori and Pākehā values to support children's development. The experience offered powerful insight into creating culturally inclusive environments and will help shape EELC's future programming.**

94.6%

Per cent of parents that stated their children were happy at the centre.

97%

Per cent of parents that stated the programming allows their child/ren to experience social, physical, intellectual, cognitive, and emotional growth.

*\*2023-2024 stats*

**EELC raises the bar**  
EELC is improving childcare quality by requiring all staff to earn their ECE Level 3 certification. With tuition coverage, flexible study options, and support from Saskatchewan's ECE Wage Enhancement Grant, staff are gaining confidence and deepening their understanding of child development.

# Ehrlo Housing

Ehrlo Housing provides affordable housing to low-income families, individuals with chronic mental health conditions, and young people transitioning from care.

Lakeshore Village  
(43 units)



**76** families served

McEwen Manor  
(39 units)



**41** adult individuals served

Chaz court  
(8 units)



**11** young adults served

## Former tenants become homeowners

Virgie and Cesar, former tenants of Ehrlo Housing, have purchased their first home after years in affordable housing. The family immigrated from the Philippines in 2019 and lived in a two-bedroom suite at Lakeshore Village while working hard to save for a downpayment. The family moved into their new Whitmore Park house in late September and are enjoying their backyard and quiet neighbourhood.

“It took determination and grit,” said Virgie, who worked two jobs while her husband searched for work. Ehrlo Housing director Shelley Sayer praised the family’s effort and care for their home.



Thanks again for being patient, now my anxiety is gone and I can relax in my beautiful home.

young mom at  
Lakeshore Village

## Overall occupancy rate

(Lakeshore Village 86%, McEwen 99.8%, and Chaz 96% occupancy)



# Ehrlo Sport Venture

Ehrlo Sport Venture ensures all youth and families have access to recreational programs including free sports leagues and an equipment lending library where sports equipment can be borrowed free-of-charge.



**243**

youth participated  
in the Ehrlo  
Monday Night  
Football League



**450**

youth participated  
in the Ehrlo  
Basketball League



**293**

youth participated  
in the Ehrlo  
Baseball Rookie  
League



**261**

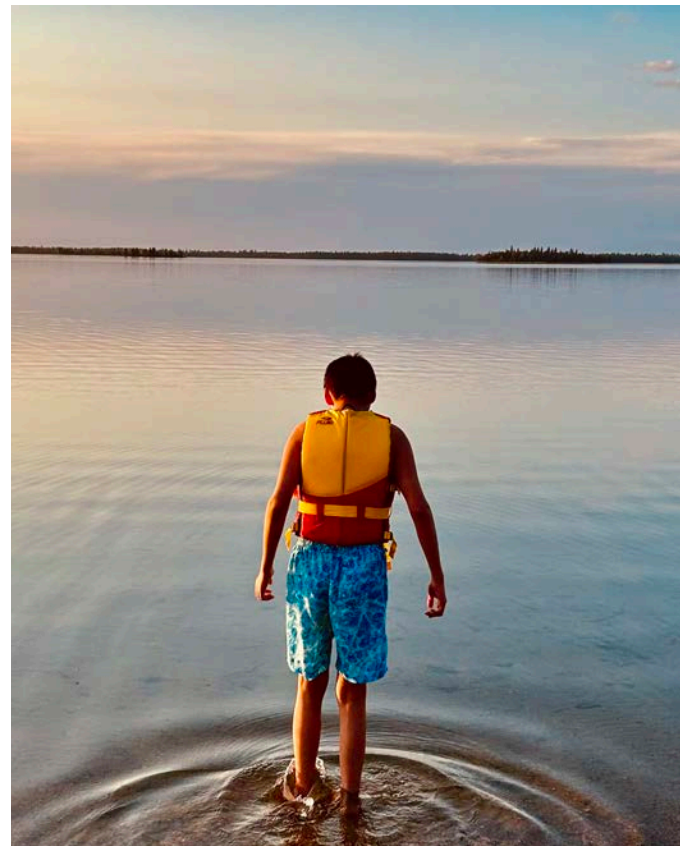
youth  
participated in  
the Ehrlo Soccer  
League



**473**

youth participated  
in the Outdoor  
Hockey League





Ranch Ehrlo Society



CWLC+LBEC

